



**Klinter**  
ENGINEERS

AN ISO 9001:2015 COMPANY

PISTON  
PISTON RINGS  
LINERS  
GUDGEON PINS

the **QUALITY**  
YOU CAN **TRUST**



Manufacturer of Engine Components



## COMPANY PROFILE

### Bringing you over 4 decades of excellence

With over 40 years of experience as a manufacturer of engine components serving both OEMs and aftermarket Klintek Engineers is now available globally.

### Our mission

Klintek Engineers strive to be our customers' worldwide, first-choice by providing intimacy and best-value engineered product solutions. We are committed to flawless execution and to achieve leadership in the markets in which we compete.

## MANUFACTURING

PISTON  
PISTON RINGS  
LINERS  
GUDGEON PINS



## QUALITY

The company was able to achieve consistent growth and industry leadership through its visionary and qualitative response to the changing consumer and market demands.

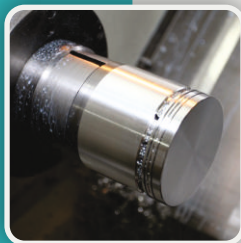
*“Explaining price is easier than apologising for quality forever”*

### THE QUALITY SYSTEM



#### 1 Metallurgy & Heat treatment

The quality of the piston starts with its metallurgy. Using pure Aluminium (LM13) material and well-equipped foundry can serve the best quality. And with advanced heat treatment process, we get proper hardness and grain structure.



#### 2 Advanced machinery

Every operation is carried out in highly précised CNC, VMC and SPM machines for better surface finish and accuracy.



#### 3 Inspection & QC

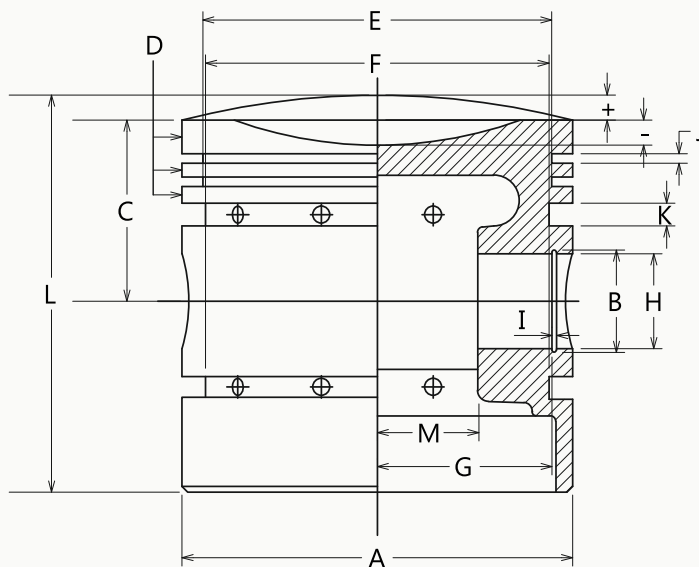
QC begins with the basic raw material itself. Castings are tested for chemical composition & physical properties in well equipped lab. These castings are also analysed for their hardness, micro-structure and tensile. Floor inspection is measured with precision measuring instruments.



# PISTON

Application of our alloy piston with superior mechanical properties enables Klintek Engineers to attain balance of weight & strength. This can sustain high inertia, thermal load & intense pressure, as demanded by today's high engine performance requirements.

Highly magnificent piston in heart of the engine will satisfy most rigorous applications.



- A** Cylinder Bore Dia
- B** Piston Pin Dia
- C** Compression Height
- D** Ring Land
- E** Comp. Ring Groove Dia
- F** Oil Ring Groove Dia
- G** Circlips Span
- H** Circlip Groove Dia
- I** Circlip Width
- J** Comp. Ring width
- K** Oil Ring Width
- L** Piston Length
- M** Distance between the bosses
- +** Crown Height





# PISTON RINGS

Piston Rings are produced to a very strict standard as it is an important component for reconditioning engines.

## ■ Top Compression Ring

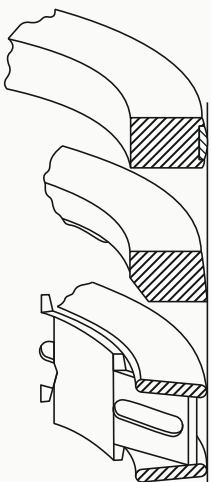
Its primary function is to seal off combustion chamber and crankcase against each other. The compression rings are to prevent combustion gases from getting into the crankcase from the combustion chamber.

## ■ Scraper rings

Scraper rings combine the function of the compression rings and the oil control rings; so in essence they keep combustion gases away from the crankcase and wipe off excess oil on the cylinder wall.

## ■ Oil Rings

The task of the oil control rings is to scrape off the excess oil from the cylinder wall to limit and to limit entry of the lubricating oil into the combustion chamber as much as possible. The aim is to achieve low oil consumption and sufficient lubrication of moving parts



**Top Compression Ring**  
Barrel-faced; moly coating on periphery

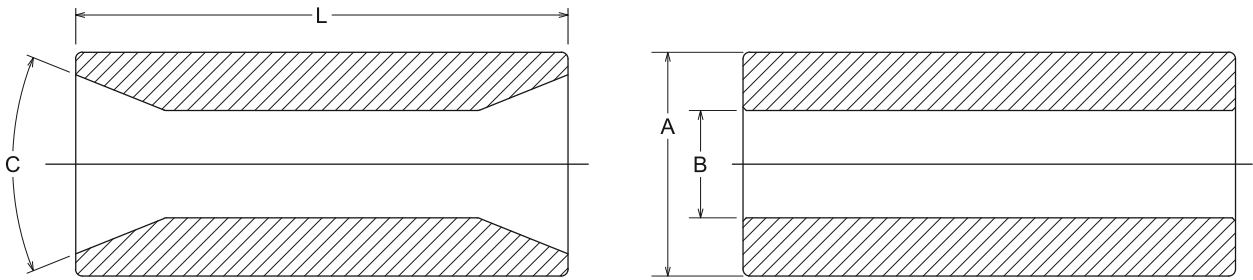
**Second Compression Ring**  
Taper-faced, twisted; due to nonsymmetrical cross-section

**Oil Ring**  
Three pieces: one expander-spacer and two segments or rails; wear coating on periphery



## GUDGEON PINS

We share a long association with OEM manufacturers. We ensure that our piston pins are very light and strong to withstand heavy mechanical shear and bending loads. High phosphorous content alloys are used to design our pins to deliver uncompromising strength. Measurement of surface finish is done using ultra high accuracy equipment.

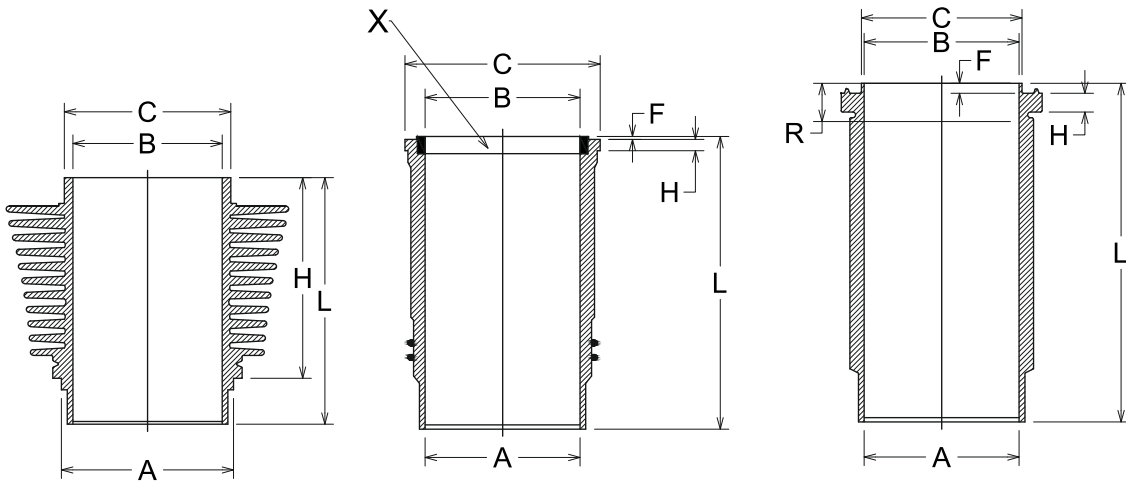


- A** Outer dia.
- B** Inner Dia
- L** Total length
- C** Taper Angle



## LINERS

Due to the lift motion of the piston and piston rings . Cylinder liners must withstand increased ignition pressures and speeds. For this reason Klintek Engineers provide optimum solution with regard to wear, durability and heat dissipation.



- |                              |                              |
|------------------------------|------------------------------|
| <b>A</b> Fitting dia.        | <b>F</b> Fire protection rim |
| <b>B</b> Max. finished liner | <b>L</b> Total length        |
| <b>C</b> Flange dia          | <b>R</b> relief height       |
| <b>H</b> Flange height       | <b>X</b> Liner ring          |



# PISTON

Truck Piston							
KE Part No.	Engine Type	Cyli. Dia	Total Length	Comp. Height	Pin Hole Dia.	No. of Oil Ring	No. of Comp. Ring
050.09700.01	Mercedes-Benz	97.00	115.700	65.200	36.000	2	3
050.09750.02	Mercedes-Benz	97.50	107.520	62.760	36.000	1	2
050.12800.03	Mercedes	128.00	126.350	81.200	46.000	1	2
050.12800.04	Mercedes	128.00	126.350	81.350	46.000	1	2
050.12800.05	Mercedes	128.00	126.350	81.350	46.000	1	2
050.12800.06	Mercedes	128.00	161.260	90.260	48.000	1	3
050.12800.07	Mercedes-Benz	128.00	126.320	81.350	46.000	1	2
050.13000.08	DAF	130.00	169.500	101.000	48x111	1	2
050.12500.09	MAN	125.00	141.870	89.870	46x105	1	2
050.12800.10	MAN	128.00	141.800	89.330	46x105	1	2
050.10477.11	VOLVO D7B	104.775	132.550	88.550	45.000	1	2
050.15875.12	Man Dorman	158.75	196.850	133.350	63.500	2	3
050.09500.13	Komatsu	95.00	94.150	51.150	30.000	1	2
050.10000.14	Mazda	100.00	105.000	58.000	34.000	1	2
050.12000.15	Tetra Truck	120.00	130.450	84.950	45.000	1	2
050.12000.16	Hino EB-300	120.00	155.250	86.000	45.000	1	3
050.13700.17	Hino EK-100	137.00	145.300	90.300	50.000	1	3



# PISTON

Car Piston							
KE Part No.	Engine Type	Cyli. Dia	Total Length	Comp. Height	Pin Hole Dia.	No. of Oil Ring	No. of Comp. Ring
040.08800.01	Peugeot	88.00	71.300	38.250	23.000	1	2
040.08400.02	Peugeot	84.00	70.000	38.250	23.000	1	2
040.08400.03	Peugeot	84.00	70.000	38.270	23.000	1	2
040.07500.10	Peugeot	75.00	49.750	27.700	18.000	1	2
040.08800.11	Peugeot	88.00	65.500	31.500	18.000	1	2
040.08500.12	Peugeot	85.00	59.000	33.300	19.050	1	2
040.08800.13	Peugeot	88.00	51.500	27.500	21.000	1	2
040.07500.06	Renault / Peugeot	75.00	49.930	27.970	18.000	1	2
040.08300.07	Renault / Peugeot	83.00	53.300	33.300	22.000	1	2
040.07800.04	Asia Towner	78.00	71.800	31.500	20.500	1	2
040.08300.05	Damas	83.00	67.000	37.500	22.000	1	2
040.08600.08	Isuzu	86.00	96.450	51.410	27.000	1	2
040.08800.09	Isuzu	88.00	82.500	47.500	27.000	1	2
040.09300.14	Isuzu	93.00	87.820	47.900	31.000	1	2
040.09300.15	Isuzu	93.00	87.900	47.900	31.000	1	2

# PISTON

Tractor Piston							
KE Part No.	Engine Type	Cyli. Dia	Total Length	Comp. Height	Pin Hole Dia.	No. of Oil Ring	No. of Comp. Ring
030.09148.01	Perkins	91.48	109.400	61.775	31.750	2	3
030.09148.02	Perkins	91.48	109.400	61.775	31.750	2	3
030.09148.03	Perkins	91.48	108.000	57.245	31.750	2	3
030.09848.04	Perkins	98.48	120.970	70.300	34.925	2	3
030.09848.05	Perkins	98.48	127.190	76.530	34.925	1	3
030.09848.06	Perkins	98.48	120.570	69.910	34.925	2	3
030.10105.07	Perkins(united)	101.050	121.080	70.263	34.925	1	3
030.10000.11	Perkins	100.000	108.000	70.000	34.925	1	2
030.10000.12	Perkins	100.000	108.000	70.000	38.100	1	2
030.09848.13	Perkins	98.480	108.400	70.550	38.100	1	2
030.09848.14	Perkins	98.480	108.100	70.250	38.100	1	2
030.09848.15	Perkins	98.480	107.600	69.750	38.100	1	2
030.10000.16	Perkins	100.000	108.120	70.270	38.100	1	2
030.10300.17	Perkins	103.000	108.300	70.000	39.700	1	2
030.10000.18	Perkins	100.000	108.230	70.260	39.700	1	2
030.11430.19	Perkins	114.300	124.640	73.840	36.510	2	3
030.10800.20	Romania	108.000	141.000	87.000	40.000	2	3
030.10800.21	Romania	108.000	141.000	87.000	40.000	2	3

# PISTON

Lister Type Piston							
KE Part No.	Engine Type	Cyli. Dia	Total Length	Comp. Height	Pin Hole Dia.	No. of Oil Ring	No. of Comp. Ring
013.12000.01	8/1 (10HP)	120.000	138.000	64.770	31.750	2	3
013.12000.02	10 HP FMS	120.000	114.850	64.770	31.750	2	3
013.12000.03	10 HP DI	120.000	115.000	64.770	31.750	2	3
013.12700.04	12 HP FMS	127.000	130.000	64.770	31.750	2	3
013.12700.05	14 HP DI	127.000	130.000	64.770	35.000	2	3
013.13000.06	16 HP DI	130.000	130.000	64.770	35.000	2	3
013.13000.07	20 HP DI	130.000	130.000	64.770	35.000	2	3
013.13000.08	Lister 16/20hp DI Short	130.000	105.700	64.770	35.000	2	3
013.14000.09	Lister GM-90	140.000	136.000	74.500	35.000	2	3
013.13000.10	GM-90 DI	130.000	130.000	70.500	35.000	2	3
013.12700.11	GM-90 DI	127.000	126.000	70.500	35.000	2	3
013.12000.12	GM-90 DI	120.000	126.000	70.500	31.750	2	3
013.12700.13	Lister DI Topland	127.000	130.000	64.770	35.000	2	3

# PISTON

Petter Type Piston							
KE Part No.	Engine Type	Cyli. Dia	Total Length	Comp. Height	Pin Hole Dia.	No. of Oil Ring	No. of Comp. Ring
012.08000.01	Petter	80.00	106.000	63.500	30.000	1	3
012.08000.02	Petter 2+2	80.00	106.000	63.500	30.000	2	2
012.08500.03	Petter	85.00	106.000	63.500	30.000	1	3
012.08750.04	Petter (3+1)	87.50	106.000	63.500	30.000	1	3
012.08750.05	Petter (2+2)	87.50	106.000	63.500	30.000	2	2
012.08750.07	Kirloskar Type	87.50	106.000	63.500	30.000	1	3
012.08731.08	Petter PH	87.31	106.000	63.500	30.000	1	3
012.09500.09	Petter	95.00	113.750	65.750	35.000	2	3
012.10200.10	Petter KE Type	102.000	116.500	66.450	35.000	1	3
012.10200.11	Petter (3+1)RV	102.000	116.500	66.450	35.000	1	3
012.10200.12	Petter (3+2)RV	102.000	116.500	66.450	35.000	2	3
012.11430.13	Petter	114.300	106.000	63.500	35.000	1	3
012.12000.14	Petter	120.000	120.100	70.100	35.000	1	2

# PISTON

Comet Type Piston							
KE Part No.	Engine Type	Cyli. Dia	Total Length	Comp. Height	Pin Hole Dia.	No. of Oil Ring	No. of Comp. Ring
011.07600.01	Comet 76.0	76.00	89.000	56.000	28.000	2	2
011.08000.02	Comet80W/C	80.00	87.000	58.000	30.000	1	3
011.08500.04	Comet (3+1)	85.00	91.000	58.000	30.000	1	3
011.08750.08	Comet Window	87.50	78.800	58.400	30.000	1	2
011.08750.09	Comet Window	87.50	78.800	58.400	28.000	1	2



# PISTON

Cub Type Piston							
KE Part No.	Engine Type	Cyli. Dia	Total Length	Comp. Height	Pin Hole Dia.	No. of Oil Ring	No. of Comp. Ring
010.08000.03	Cub 80.00	80.00	60.500	43.500	24.000	1	2

# PISTON

Other Piston							
KE Part No.	Engine Type	Cyli. Dia	Total Length	Comp. Height	Pin Hole Dia.	No. of Oil Ring	No. of Comp. Ring
014.05500.01	Villiers MK12 (old type)	55.00					
014.05500.02	Villiers MK12 (new type)	55.00					
014.07000.03	Villiers MK25	70.00					

# PISTON

Compressor							
KE Part No.	Engine Type	Cyli. Dia	Total Length	Comp. Height	Pin Hole Dia.	No. of Oil Ring	No. of Comp. Ring
020.07000.01	TATA909Com.	70.00	59.000	27.000	16.000	1 1	2
020.07700.02	TATA1210Com.	77.00	59.000	30.000	15.000	1	2
020.06700.03	Tata Cummins Comp	67.00	46.100	23.850	15.875	1	2
020.09400.04	TATA Com. 1612	94.00	52.300	27	16	1	2
020.09525.05	York Comp.	95.25	92.020	57.155	31.75	0	2
020.09296.06	York Comp.	92.964	83.320	53.35	28.575		2
020.06826.07	Carrier 06E 2 11/16"	68.28	51.580	28.830	22.230		2
020.08255.08	Voltas 5H40						
020.09000.09	Mercedes Compressor	90.00	57.500	35.000	20.000	1	2
020.09000.10	Mercedes Comp.	90	57.500	35	20	1	2
020.10000.11	Mercedes Compressor	100.000	52.200	30.400	20.000	1	2
020.10000.12	Mercedes Compressor	100.000	52.200	30.400	20.000	1	2
020.07620.13	IR 3"	76.20	82.550	52.370	15.875	2	2
020.10160.14	IR 4inch	101.600	95.350	56.900	20.630	2	2
020.12700.15	IR 5 Inch	127.000	125.200	76.175	25.349	2	2
020.12700.16	IR 5 Inch	127.000	125.200	76.175	30.124	2	2
020.06500.18	Sebro Com.	65.00	85.000	49.450	25.000	1	2
020.10000.19	Sebro Com.	100.000	119.950	69.950	40.000	1	2

# PISTON

Compressor							
KE Part No.	Engine Type	Cyli. Dia	Total Length	Comp. Height	Pin Hole Dia.	No. of Oil Ring	No. of Comp. Ring
020.10000.20	Sebro Com.	100.000	109.950	59.950	40.000	1	2
020.10000.25	LG COM.	100.000	U/D				
020.16000.26	Kirloskar	160.000					

# PISTON

Light Comm. Vehical Piston							
KE Part No.	Engine Type	Cyli. Dia	Total Length	Comp. Height	Pin Hole Dia.	No. of Oil Ring	No. of Comp. Ring
060.07800.01	Greaves 520	78.00	72.000	44.000	20.000	1	3
060.08200.02	Greaves 530	82.00	72.000	44.000	20.000	1	3
060.08600.03	Greaves GL-400 (BS1)	86.00	72.000	44.000	20.000	1	2
060.08600.04	Greaves BS-2	86	72.000	44.000	20.000	1	2
060.08600.09	Greaves BS-3	86.00	72.000	44.000	20.000	1	2
060.08500.12	Greaves 510	85.00			23.000		
060.08500.13	Greaves 450	85.00			23.000		
060.08500.06	Greaves	85.00	85.000	47.000	23.000	1	3
060.08500.05	VIKRAM CNG	85.00	70.700	38.380	23.000	1	2
060.08300.14	Bajaj GC-1000 (kubota)	83.00					
060.07400.07	APE CNG-280	74.00	56.000	36.500	17.000	1	2
060.06260.11	APE-City CNG	62.60	41.120	25.070	15.000	1	2
060.07500.08	Tata ACE	75.00	69.000	43.000	23.000	1	2



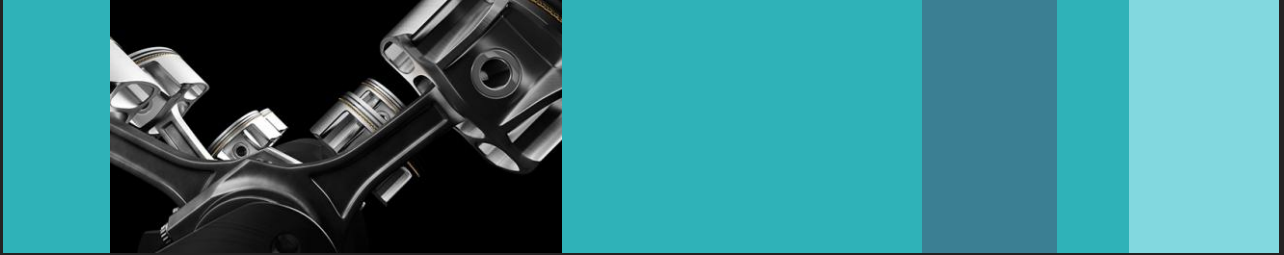
# PISTON

Other Piston							
KE Part No.	Engine Type	Cyli. Dia	Total Length	Comp. Height	Pin Hole Dia.	No. of Oil Ring	No. of Comp. Ring
00.08600.01	Trumph	86.00	87.320	50.805	22.220	2	2
00.08600.02	Trumph	86.00	87.320	50.805	22.220	1	2
00.08100.03	Ford	81.00	80.030	43.835	19.050	2	2
00.07600.04	Kubota	76.00	80.050	43.520	25.000	1	1
00.11000.14	Russian Balarus	110.000	124.670	79.000	38.000	1	3

# PISTON

Tractor Piston							
KE Part No.	Engine Type	Cyli. Dia	Total Length	Comp. Height	Pin Hole Dia.	No. of Oil Ring	No. of Comp. Ring
030.08600.22	Kubota ET95	86.00	88.000	47.000	27.000	1	3
030.09500.23	Kubota	95.00	105.000	53.500	30.000	2	3
030.10200.24	Deutz FL-913	102.000	123.200	74.550	35.000	1	3
030.10000.25	Deutz FI-912	100.000	123.600	77.660	35.000	1	2
030.11176.26	Ford	111.760	111.760	68.150	38.100	1	3
030.11176.27	Ford	111.760	129.500	70.650	38.100	1	3
030.10000.29	Fiat Iveco	100.000	101.200	59.700	32.000	1	2
030.08500.33	China Tractor	85.00	82.820	48.910	29.000	1	2
030.08500.34	China Tractor	85.00	81.160	46.220	28.000	1	2
030.08500.35	China Tractor	85.00	80.200	46.250	28.000	1	2
030.09500.36	China Tactor	95.00	99.92	60.00	35.00	1	2
030.09000.37	China Tactor	90.00	87.900	50.02	28.00	1	2
030.09000.38	China Tactor	90.00	87.900	50.02	28.00	1	2
030.11000.39	China Tactor	110.000	103.350	57.530	36.000	1	2
030.10500.40	China Tactor	105.000	103.350	57.530	36.000	1	2
030.10000.41	China Tactor	100.000	104.900	60.000	35.000	1	3
030.10000.42	China Tactor	100.000	103.450	57.550	36.000	1	2

PISTON  
PISTON RINGS  
LINERS  
GUDGEON PINS



Vavdi Survey no-44, Plot no-75,  
Nr. Punitnagar, 150 feet ring road,  
Rajkot-360 004, (Guj.), INDIA.

+91 (0) 281 2311477  
+91 - 98259 98130  
+91 - 98793 09232

info@kepistons.com  
www.kepistons.com